

4709/639 Lonsdale Street Melbourne, VIC



2



1

CAPITAL C HOME

Perfectly positioned in the Heart of the CBD, Upper West Side complex offers all the excitement of city living with lock-and-leave convenience. Southern Cross Station and the airport shuttle bus is just cross the road, while RMIT and Melbourne University are easily accessible via tram. Easy walking distance to Spencer Outlet Shopping, Coles, Asian Grocery, Flagstaff Garden, Marvel Stadium, Docklands, restaurant and cafes.

Apartment Highlights:

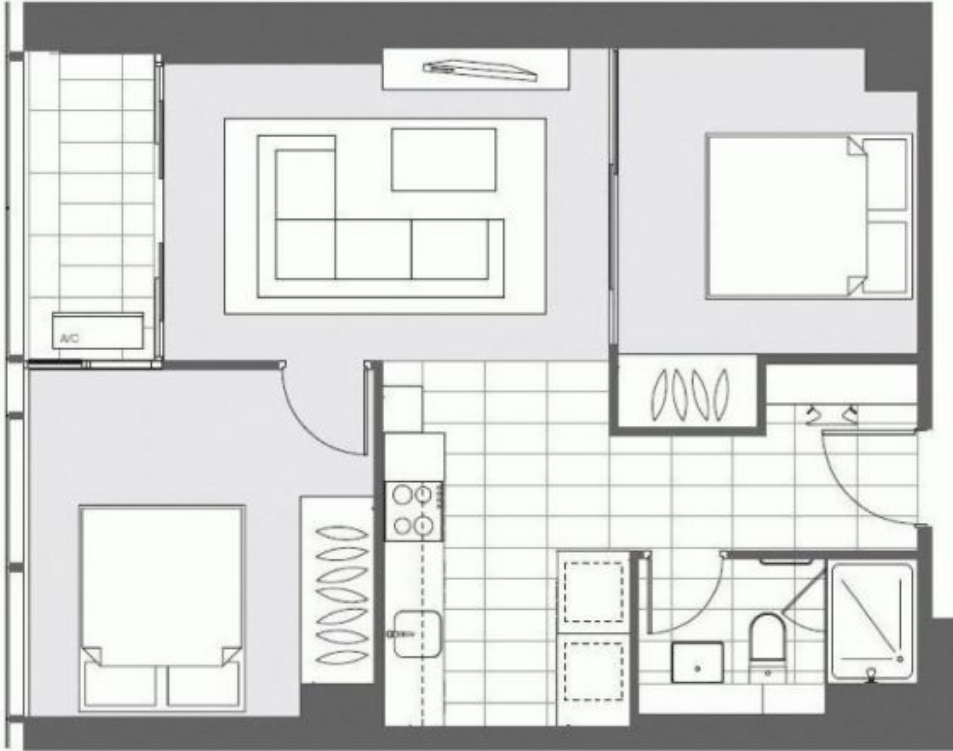
- ? 2 Bedrooms with built-in robes, 1 Bathroom
- ? Private Balcony with Spectacular Views, double glazing
- ? Open plan living and dining area with study nook
- ? The modern kitchen boasts top-of-the-line appliances, including a dishwasher, electric cooktop, electric oven, and generous cupboard storage
- ? Concealed European laundry, combining functionality and style
- ? Reverse cycle heating and cooling

Lina Wang

0450 026 669

Yi Zeng

0452 667 881



4709/639 Lonsdale Street MELBOURNE 3000

Whilst every attempt has been made to ensure the accuracy of the floor plan, all measurements, fixed installations and furnishings are for illustrative purposes only and should be used as such by any prospective purchaser/tenant.

