



36 Prospect Street Box Hill Central, VIC



2



2

YOUR LUXURY FIVE STAR LIVING AWAITS IN BOOMING BOX HILL

BUY NOW ...SAVE FOR THE FUTURE

Book with us for your private tour at the Display Suite on 948 Whitehorse Road Box Hill and discuss the further opportunities this new development has to offer..

-50% Stamp Duty Saving applied until 30th June 2021!

-Limited FREE Furniture Package or 6% Rental Guarantee available till 30th June!

-FIRB Paid by developer!

Stunning new apartments with panoramic views across Port Phillip Bay, Melbourne's CBD and The Dandenong Ranges

Developed by CBR Development Group, architect designed by Peddle Thorp, landscape designed by John Patrick, built by Hickory Group.

CONSTRUCTION HAS COMMENCED!

Beautiful natural light through large glass windows.

Yi Zeng

0452 667 881

Michelle Kwan

0422 135 237

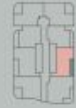


PROMENADE
BOX HILL

APT
TY03

Bedrooms	1
Bathrooms	1
Internal Area	48 m ²
Balcony Area	9 m ²
Total area	57 m²

LEVEL 05-24



Disclaimer: The information provided is illustrative only and may not be relied upon. In particular, the final area dimensions of any apartment sold will be determined by the contract of sale and may differ from the depicted. Whilst every effort is made to provide accurate and complete information, the developer does not warrant or represent that the information in this floor plan is free from errors or omissions or is suitable for your intended use. Subject to any terms implied by law which cannot be excluded, the developer accepts no responsibility for any loss, damage, cost or expense (whether direct or indirect) by you as a result of any error, omission or misrepresentation in information. Areas noted have been derived from using the "Property Council of Australia Method of Measurement". All information is subject to change without notice. LAYOUTS HAVE BEEN ORIENTATED FOR PRESENTATION PURPOSES.